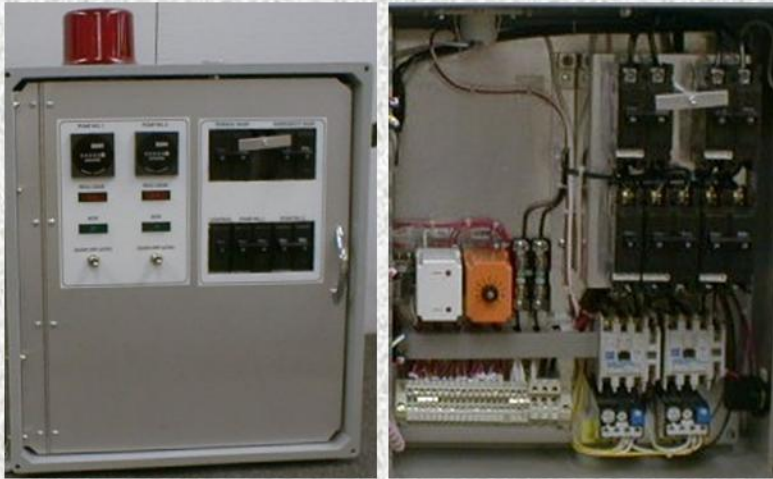


# Model DEP Duplex Control Panel



## Standard Components:

- UL 508 label
- Lightning/ Surge arrestor
- Generator receptacle
- Undervoltage or Phase monitor relay (fused)
- Weatherproof enclosure
- Inner aluminum deadfront door
- Electronic alternator
- Pump Run indicator lights
- Elapsed Run time meters
- Seal failure alarm lights
- Motor thermal inputs
- Hand-Off-Auto selector switches
- Alarm beacon
- Alarm horn
- Silence pushbutton and relay circuit
- Customer terminal blocks
- Interlocked Emergency and Main breakers
- Pump motor circuit breaker (1 per pump)
- IEC motor starter (1 per pump)
- As-built diagrams and data sheets included

## Standard Features

- One year warranty
- Built to DEP and UL 508A standards
- Single or Three phase configurations
- Space provided for single phase kits
- 2 thru 10 horsepower ratings
- Choose enclosure option of Fiberglass Nema 4X, Galvanized Nema 3R or Stainless steel Nema 3R
- Panel wiring is color coded and clearly numbered to facilitate servicing
- All components are permanently labeled with scratch resistant labeling
- Each control panel is thoroughly tested prior to shipment

## Optional Features

- Control transformer for 3 phase 3 wire applications
- Remote alarm beacon/ horn enclosures
- GFI Duplex receptacle on inner door
- Seal failure relays
- Intrinsically safe float control
- Auxiliary status and alarm contacts

*Please note: If you require a feature not shown, please contact the factory for a customized quotation at (904) 693-3318 or [Sales@Suncoast-hyd-elect.com](mailto:Sales@Suncoast-hyd-elect.com).*



136 N. Ellis Road  
Jacksonville, FL 32254

Phone: 904-693-3318

Fax: 904-693-3203

Web: <http://www.Suncoast-hyd-elect.com>