



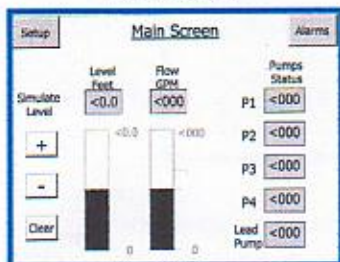
Hydraulic Electric Manufacturing

Touchtrol CS

Setup As Easy As 1-2-3 !!

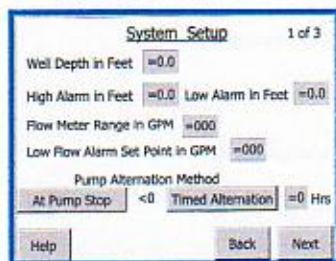
Non-technical personnel can have system setup and operating in 5 minutes from a few simple screens

Main Screen



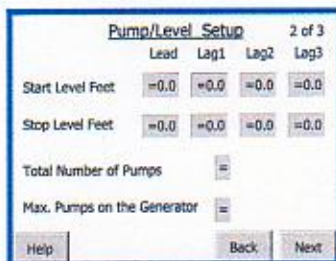
- Bargraph displays for station level and flow
- Level simulation buttons for testing station configuration
- Start order and pump availability indication

System Setup Screen



- Configure Wet Well parameters
- Adjust Flow Meter range and low flow alarm setpoint
- Select alternation mode for "At Pump Stop" or "Timed"

Pump / Level Setup Screen



- Set pump start / stop levels
- Set number of pumps on system
- Set number of pumps on generator

The Sun Coast Touchtrol CS is a self-contained pump controller equipped to handle 1-4 well pumps using fixed speed across-the-line starters.

The unit is 100% SCADA compatible and utilizes a structured data file layout that facilitates SCADA and other communications interfacing. The CS series shares the same basic program data structures as the larger Touchtrol VS variable speed controller.

The CS platform will accept the additional data requirements making it possible to field replace the CS with the VS model and only require a minimum of modification to the users SCADA system.

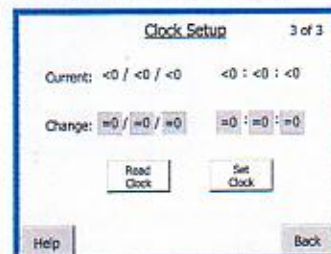
The Touchtrol CS comes standard with a 5" monochrome Windows CE based Touch screen operator interface. Updates to the screen are fast due to the structured data layout between the PLC and the Touch-screen.

There are also 6 configurable spare outputs typically for use with either a standard auto-dialer or a radio telemetry unit.

Upon boot-up and after the initialization period, a screen which can be customized with the users logo, will appear. This screen offers a choice of buttons: Main screen, Setup screen and Alarm screen.

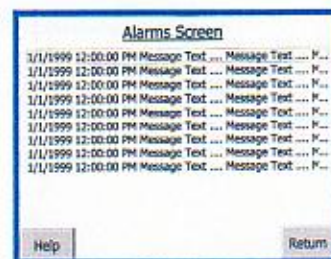
All user functions are accessible through a series of touch sensitive menu buttons located across the bottom of each screen.

Clock Setup Screen



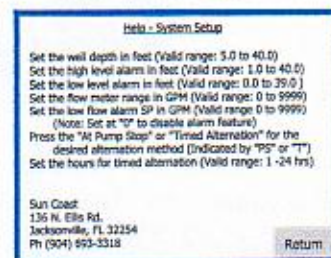
- Set actual time in hr / min / sec
- Set actual date in mo / day / yr

Alarm Screen



- Monitor Level Controller alarms
- Date/ Time stamp for each alarm
- Common reset for all alarms

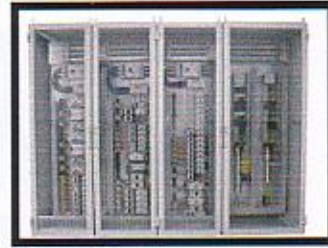
Help Screen (Typical)



- Explanations of system setup and operation



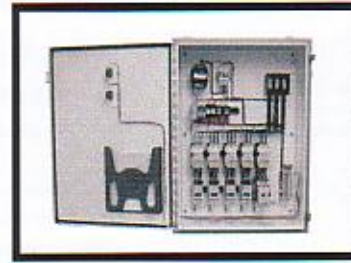
Located in Jacksonville, Florida



Custom motor control centers



Our 16,000 square foot manufacturing facility



NEMA rated control panels and components



UL508A and UL913 certified electrical shop



Hydraulic power units and tank systems

Contact Information



Hydraulic Electric Manufacturing

136 N. Ellis Rd.
Jacksonville, FL 32254

Phone: 904-693-3318

Fax: 904-693-3203

Email:

TSparks@Suncoast-Hyd-Elect.com

MGross@Suncoast-Hyd-Elect.com

MHodges@Suncoast-Hyd-Elect.com



Plant instrumentation control cabinets