



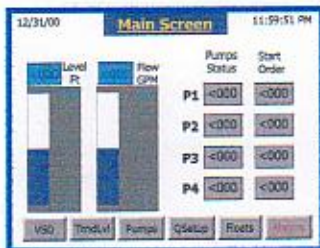
Hydraulic Electric Manufacturing

Touchtrol VS

Setup As Easy As 1-2-3 !!

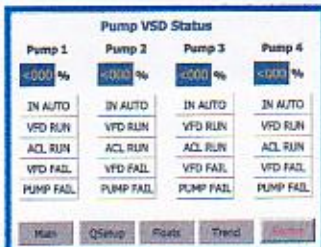
Non-technical personnel can have system setup and operating in 5 minutes from a few simple screens

Main Screen



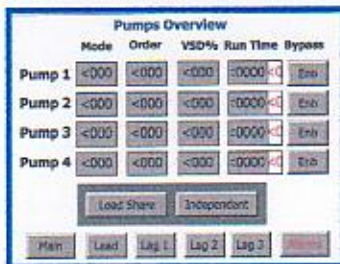
- Bargraph displays for station level and flow
- Running status of pumps
- Start order indication

Pump VSD Status Screen



- Monitor each VSD running speed
- Determine each VSD operational availability
- Monitor each VSD Run/ Fault status

Pumps Overview Screen



- Monitor pump run time and speed
- Select independent or load sharing pump mode
- View pump run and start order
- Enable Bypass pump control

The Sun Coast Touchtrol VS is a self-contained pump controller equipped to handle 1-4 well pumps using variable speed and fixed speed across-the-line starters.

The unit is 100% SCADA compatible and utilizes a structured data file layout that facilitates SCADA and other communications interfacing. The VS series shares the same basic program data structures as the smaller Touchtrol CS constant speed controller.

The VS adds the additional data requirements on top of the CS system making it possible to field replace the CS with the VS model and only require a minimum of modification to the users SCADA system.

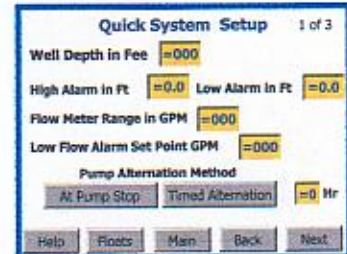
The Touchtrol VS comes standard with a 5" color Windows CE based Touch screen operator interface. Updates to the screen are fast due to the structured data layout between the PLC and the Touch-screen.

There are also 2 configurable alarm outputs typically for use with either a standard auto-dialer or a radio telemetry unit.

Upon boot-up and after the initialization period, a screen which can be customized with the users logo, will appear. This screen offers a choice of buttons: Main screen, Setup screen and Alarm screen.

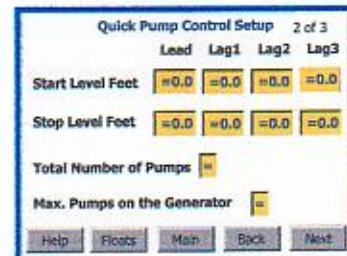
All user functions are accessible through a series of touch sensitive menu buttons located across the bottom of each screen.

Quick Setup Screen 1



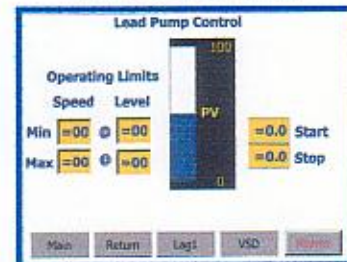
- Set Wet Well level
- Configure high and low alarms
- Set Flow meter range and low flow alarm setpoint
- Select alternation mode for "At Pump Stop" or "Timed"

Quick Setup Screen 2



- Configure pump start/ stop parameters
- Configure number of pumps in system
- Select number of pumps to operate on generator power

Pump Setup Screens



- Configure VSD min/ max speeds
- Adjust VSD min/ max speed levels
- Set pump start/ stop level
- Monitor station Wet Well level
- Typical screen for all 4 pumps



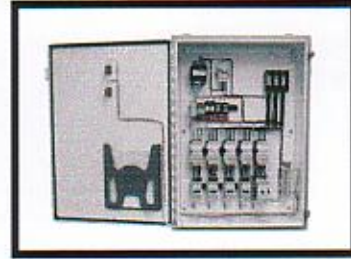
Located in Jacksonville, Florida



Custom motor control centers



Our 16,000 square foot manufacturing facility



NEMA rated control panels and components



UL508A and UL913 certified electrical shop



Hydraulic power units and tank systems

Contact Information



Hydraulic Electric Manufacturing

136 N. Ellis Rd.
Jacksonville, FL 32254

Phone: 904-693-3318

Fax: 904-693-3203

Email:

TSparks@Suncoast-Hyd-Elect.com

MGross@Suncoast-Hyd-Elect.com

MHodges@Suncoast-Hyd-Elect.com



Plant instrumentation control cabinets